

An aerial photograph of a large residential complex. The complex consists of numerous high-rise apartment buildings arranged in a grid-like pattern. The buildings are light-colored with many windows. The complex is surrounded by lush greenery, including trees and a large open area that appears to be a park or sports field. The sky is clear and blue.

**INCOR PBEL CITY PHASE 3 - CHENNAI**

## B5-Marbella

### Week-3:



UG Sump shuttering in progress



UG Sump shuttering work in progress.

B6-Trinity

Week-1:



Sump area excavation work in progress

Week-3:



Dewatering in progress

## C1-Newport :

### Week-2:



Soil compaction work in progress

### Week-3:



Soil leveling & reinforcement work

## C2-Destin :

### Week-1:



Excavation work in progress

### Week-2:



Excavation along with dewatering work in progress

**E1-Malta**

**Week-2:**



Waterproof coating work in progress

**Week-3:**



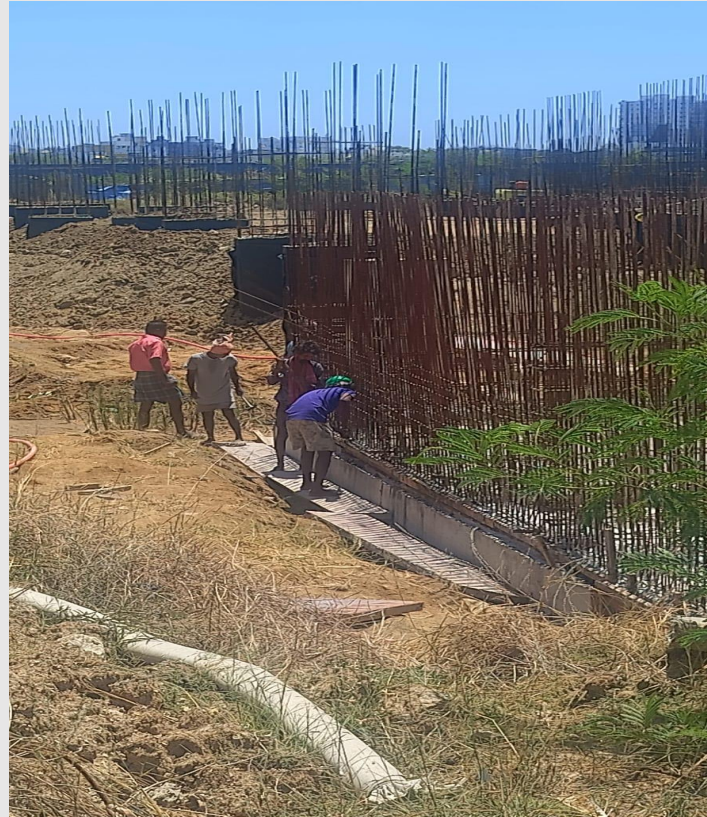
Waterproof coating work in progress

## B5-Marbella

### Week-3



UG sump raft concrete work



UG sump deshuttering work in progress



UG sump concreting work completed & Curing in progress

B6 -Trinity & C3 - Miramar:

Week-3



Dewatering work in progress

## C1-Newport:

### Week-4



North side soil levelling and roller compaction works in progress



U G sump pump room shuttering works in progress

## E1-Malta:

### Week-4



South side waterproofing completion  
area 1st layer soil filling works in  
progress